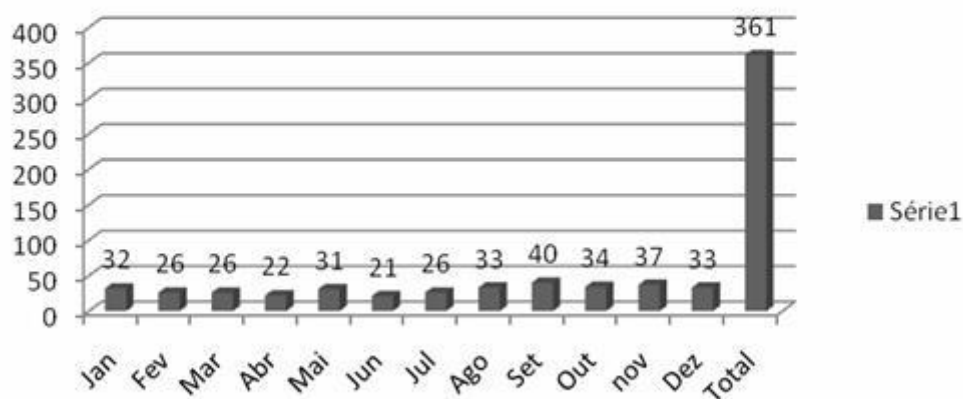
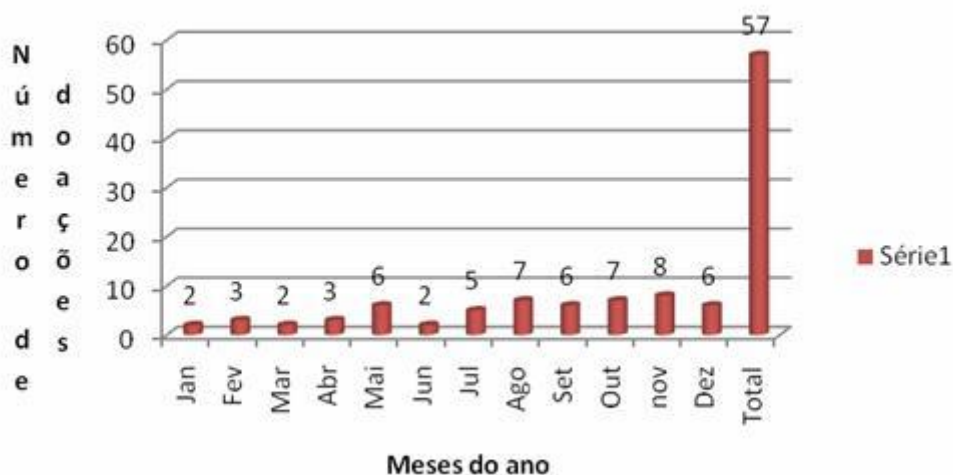


Estatísticas 2010

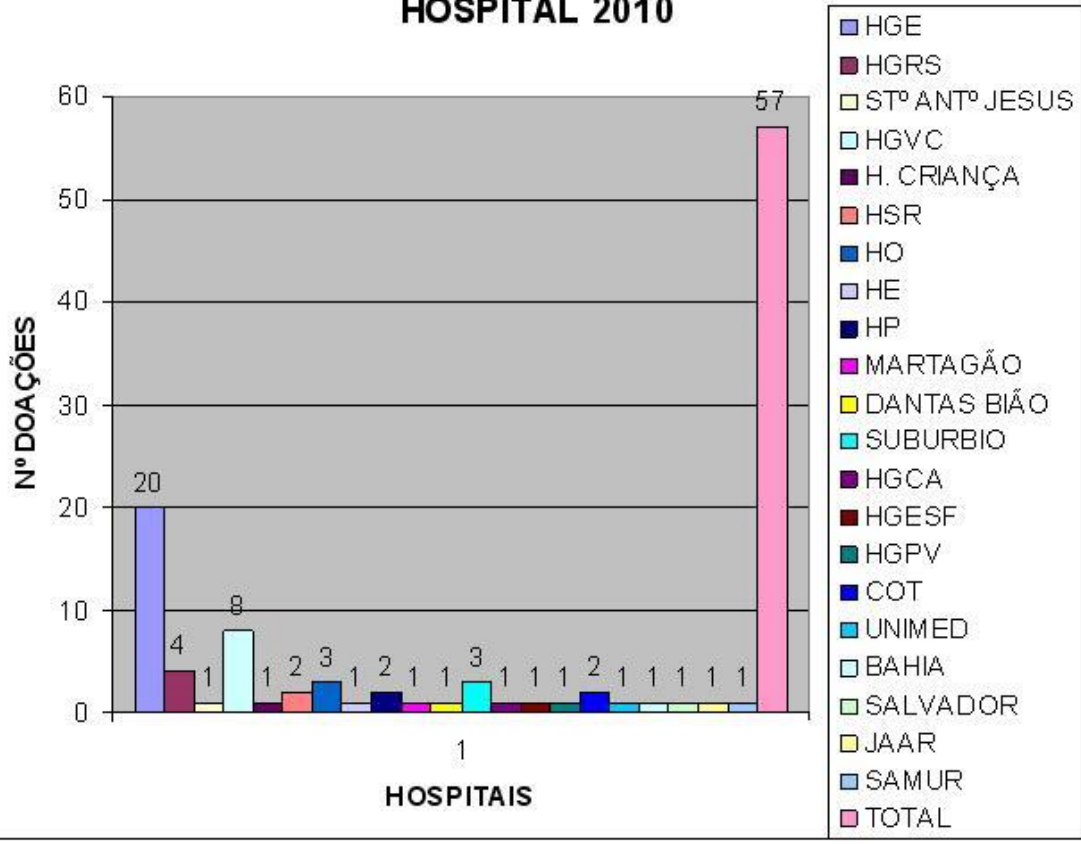
Notificação de Morte Encefalica Bahia 2010

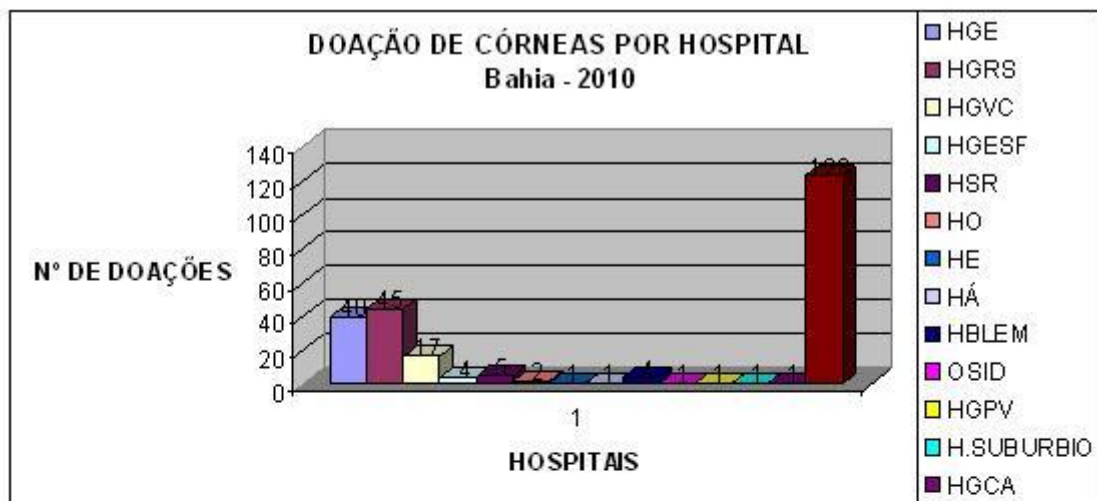


Doações de Múltiplos Órgãos -2010

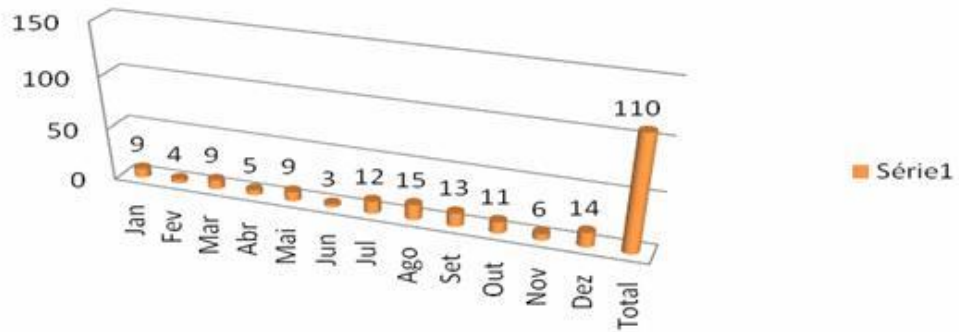


DOAÇÃO DE MÚLTIPLOS ÓRGÃOS POR HOSPITAL 2010

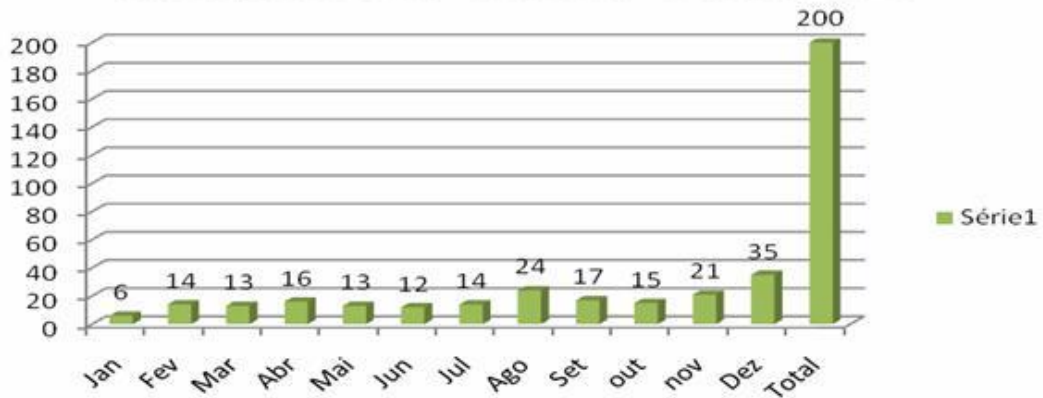




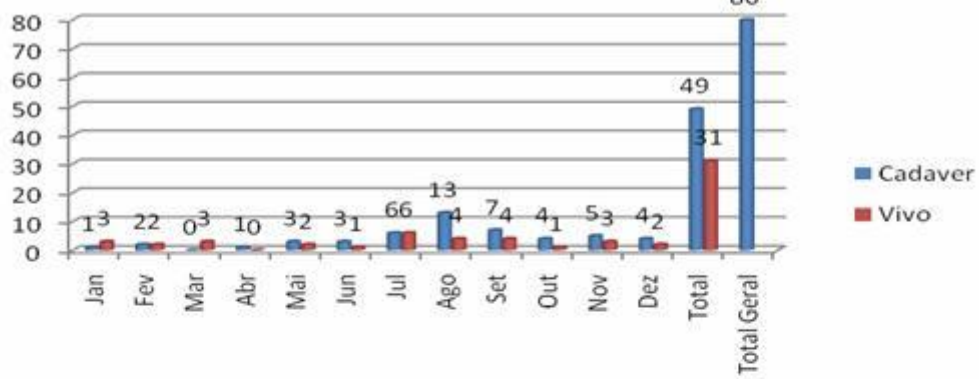
Negativa Familiar para doação de órgãos / Bahia 2010



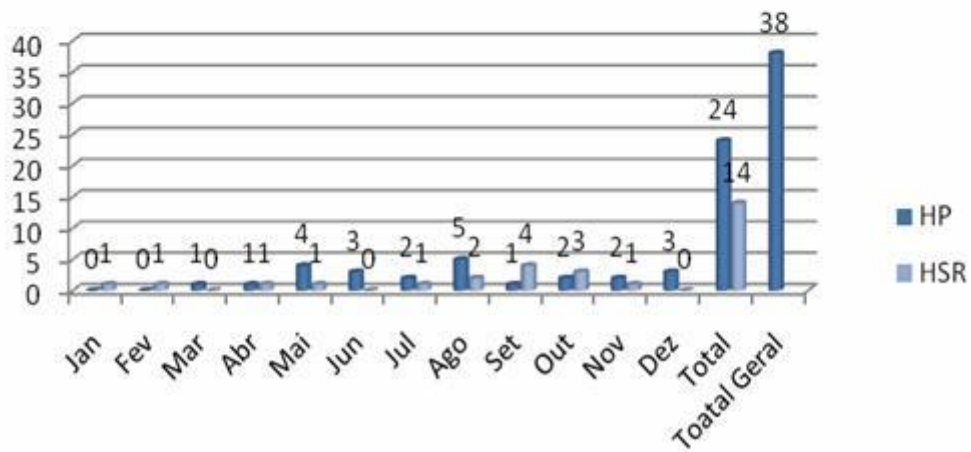
Transplante de Córnea - Bahia 2010



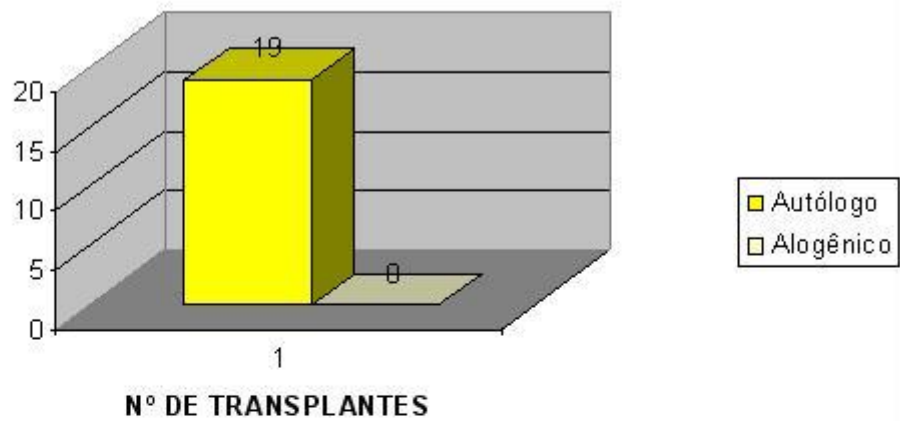
Transplante Renal - Bahia 2010



Transplante Hepático Bahia- 2010



TRANSPLANTE DE MÉDULA OSSEA



Transplante Osseo Bahia - 2010

